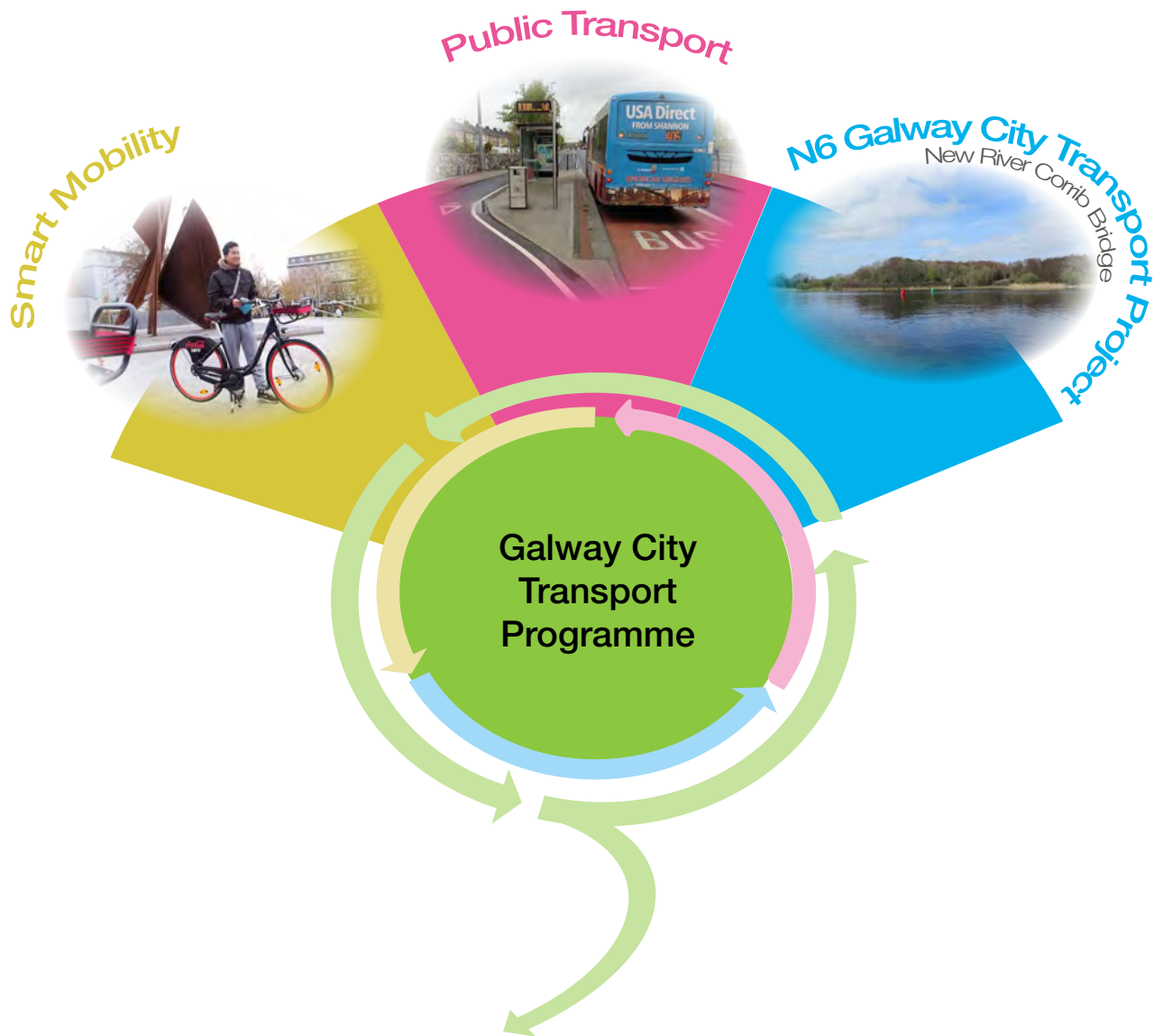


# The Transport Vision for Galway

All elements of transport  
working together...



...to achieve an integrated  
sustainable solution.

# Introduction

Galway City Council and Galway County Council wish to continue to develop the transport vision for Galway where all elements of transport are working together to achieve an integrated sustainable solution. This vision recognises that the West Region has a significant and valuable resource in its natural heritage environment with a wide variety of species and habitats of local, national and international importance, whilst also being conscious of the need to establish effective communication links to ensure that the region continues to thrive and to offer an alternative to the east coast corridor. To get Galway City and environs working and functioning in a sustainable manner for the future is key to this vision.

Galway City experiences significant transport problems such as:

- Peak hour congestion and journey time unreliability;
- Over reliance on private cars;
- Lack of alternative transport modes; and
- Lack of road space for the development of Smarter Mobility and Public Transport.

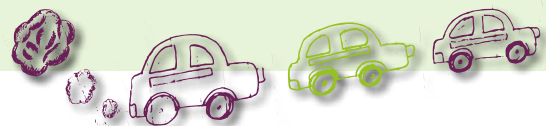
The transport vision being developed to address these issues includes Smarter Mobility, Public Transport and a new River Corrib Crossing.

Galway City Council have established that there is a need to provide relief from traffic congestion to implement smarter mobility and public transport measures. Previous studies have indicated that this cannot be achieved without another River Corrib bridge crossing.

The N6 Galway City Transport Project confirms that such a crossing is possible and has identified a preferred location for this crossing.

This important milestone now allows a more considered programme of measures to be developed to deliver a transport vision for Galway. Galway City Council, in partnership with the National Transport Authority (NTA), is undertaking a process to review and consolidate transport proposals for the city, in order to form a coherent and integrated 'transport strategy'- which is to be formulated as an **'Integrated Transport Management Programme' for Galway**. This programme will set out the smarter mobility, public transport and infrastructure measures required and allow planning and funding applications to be made.

The Integrated Transport Management Programme for Galway will inform how the new River Corrib bridge crossing and the **N6 Galway City Transport Project** may contribute to the development of an integrated transport solution for Galway. Galway County Council supported by Galway City Council and the National Roads Authority (NRA) are committed to intertwine this corridor, within which new road infrastructure can be implemented, with the package of measures evolving from the public transport and smarter mobility projects to deliver a final solution which is sustainable and achievable.



City centre  
needs relief  
from traffic



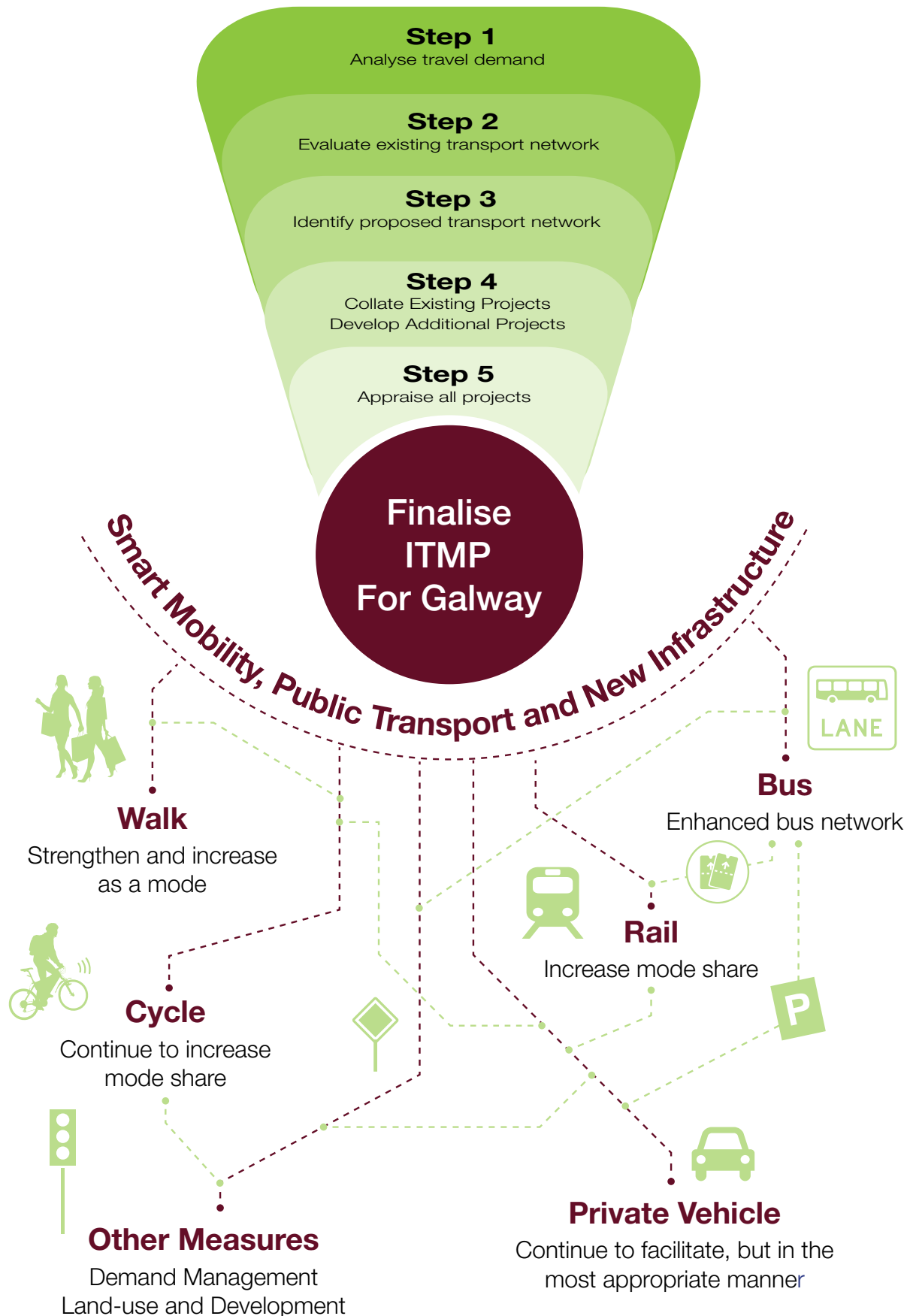
Need  
space  
to progress  
smart mobility  
and public  
transport



Need another  
bridge crossing



The strategy includes mapping origin and destination desire lines to establish the optimum provision of public transport to serve this demand and to improve cross city connectivity, identification of infrastructural pinch points, demand management testing and park and ride potential. The final output will represent the optimum approach to an all-inclusive transportation framework that maximises the potential for creating capacity both by modal shift and infrastructure improvements in order to meet both the current and the future needs of Galway.





## Key Elements

1. Connection to the west of County Galway and the Gaeltacht region
2. Reduction of through traffic in Bearna Village
3. Provision of connection to Knocknacarra
4. New bridge crossing of the River Corrib connecting west to east
5. Provision of connections between the national roads
6. Provision of access to Parkmore and Ballybrit industrial areas
7. Free-flow junction providing connection to existing N6





## Emerging Preferred Route Corridor

The proposed N6 ties into the existing R336 at an at-grade roundabout junction approximately 2km to the west of Bearna Village and then proceeds north and east to the north of Bearna Village and onwards towards Letteragh. An at-grade roundabout is proposed at Na Foráí Maola to minimise impacts to homes at this location. This section delivers an effective single carriageway bypass of Bearna Village and also connects the R336 and Connemara to the National road network.

At-grade roundabouts are also proposed at the crossing point of the Bearna to Moycullen road and at the Ballymoneen Road, which provides connectivity to Knocknacarra and ultimately releases capacity on the existing road network to deliver a public transport corridor from the western suburbs. A dual carriageway is proposed from the townland of Letteragh with a grade separated junction to connect the N59.

A new link road connects the N59 to the north of Bushypark Church and Bóthar Stiofáin with the proposed N6.

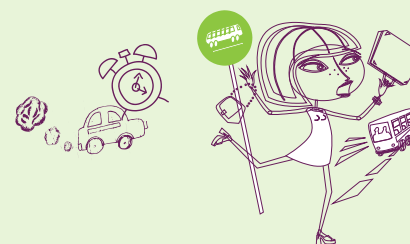
The proposed N6 then continues in sections of cut and fill, travelling over the N59 at Dangan, through National University of Ireland Galway's recreational lands and over the River Corrib on a bridge structure. This location has been identified as the preferred new crossing point on the River Corrib.

To the east of the river, the proposed N6 is generally on embankments or viaduct structures, before entering a section of cut preceding a tunnel at Lackagh Quarry. The provision of these viaducts and the tunnel at Lackagh Quarry enable the proposed N6 Galway City Transport Project to cross the Lough Corrib cSAC without direct impact on Annex I habitat.

After exiting the tunnel, it continues on embankments and passes over the N84. Grade separated signalised junctions are provided at the N84 and the N17. The junction with the

N17 facilitates a high quality access to Parkmore and Ballybrit Industrial Estates, thus releasing capacity on the local road network at Briarhill.

The proposed N6 then proceeds in a cut and cover tunnel to the north of Galway Racecourse before turning south to connect to an all-movement grade separated junction to the south of the existing Briarhill Junction, in the townland of Coolagh. The convergence of all movements at this single junction in an area where the existing N6 already dominates the landscape, reduces the impacts to the receiving environment at Coolagh Village. It also provides a clear terminus to the western end of the M6.

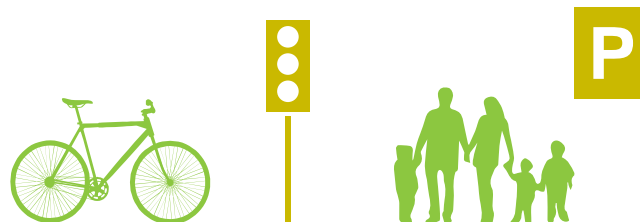


The proposed N6 meets the project objectives and avoids direct impacts on designated priority habitat. The preferred route option, which is 16.5km in length and between 25m and 75m in width, lies within the emerging preferred corridor of 150m in width and has been designed to reduce the impact on residential property as much as possible. The estimated cost of the scheme is in the order of €600M.



## What is the purpose of this consultation?

- Provide details of the Emerging Preferred Route Corridor for the N6 Galway City Transport Project.
- Invite comment on the ongoing studies of the sustainable elements of the overall transport solution
- Provide an introduction on the Integrated Transport Management Programme



## What Happens Next?

The Integrated Transport Management Programme will set out a long term transport programme for Galway City. Walking, cycling, bus and rail measures will be included in the Programme, as well as mobility management to reduce reliance on private motorised transport and hence increase the use of sustainable travel modes.

Once the Programme has been established in 2015, the individual major schemes within the Programme can be developed and will go through the normal planning processes.

Following this public display of the emerging preferred route corridor for the N6 Galway City Transport Project, submissions received from the public will be processed and incorporated into the design stage where possible. The emerging preferred route corridor will be reviewed and revised where necessary.

A Route Selection Report will be published, recommending the preferred route corridor for the N6 Galway City Transport Project.



If you are unable to attend the public consultation exhibition the proposals may be viewed at the addresses below until 12 June 2015. Please submit submissions by 12 June 2015.

### N6 Galway City Transport Project

Corporate House  
City East Business Park  
Ballybrit  
Galway

t 091 460675  
e N6GCOB@arup.com

### Integrated Transport Management Programme

Galway City Council  
City Hall  
College Road  
Galway

t 091 536400  
e gtu@galwaycity.ie

For more information and updates on the N6 Galway City Transport Project please visit our dedicated project website at:

[www.n6galwaycity.ie](http://www.n6galwaycity.ie)